

PART OF THE NE.1/4, OF SECTION 8, T.7N., R.2E., S.L.B. & M.
OVERLOOK EAST AT POWDER MOUNTAIN

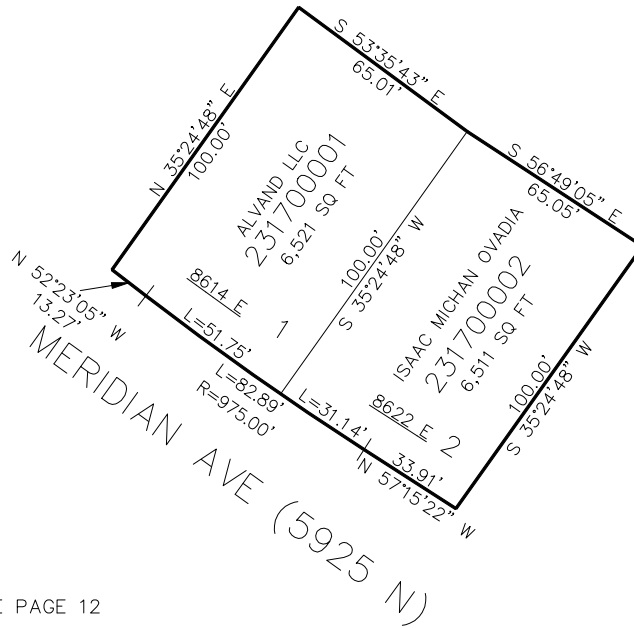
170

TAXING UNIT: 491

IN WEBER COUNTY
SCALE 1" = 30'

SEE PAGE 12

SEE PAGE 12



SEE PAGE 12

SEE PAGE 12

10' UTILITY & DRAINAGE EASEMENTS EACH
SIDE OF PROPERTY LINES AS INDICATED
BY DASHED LINES EXCEPT AS OTHERWISE
SHOWN.

FOR COMPLETE SURVEY DATA SEE
ORIGINAL DEDICATION PLAT IN
BOOK 95, PAGE 52 & 53 OF RECORDS.